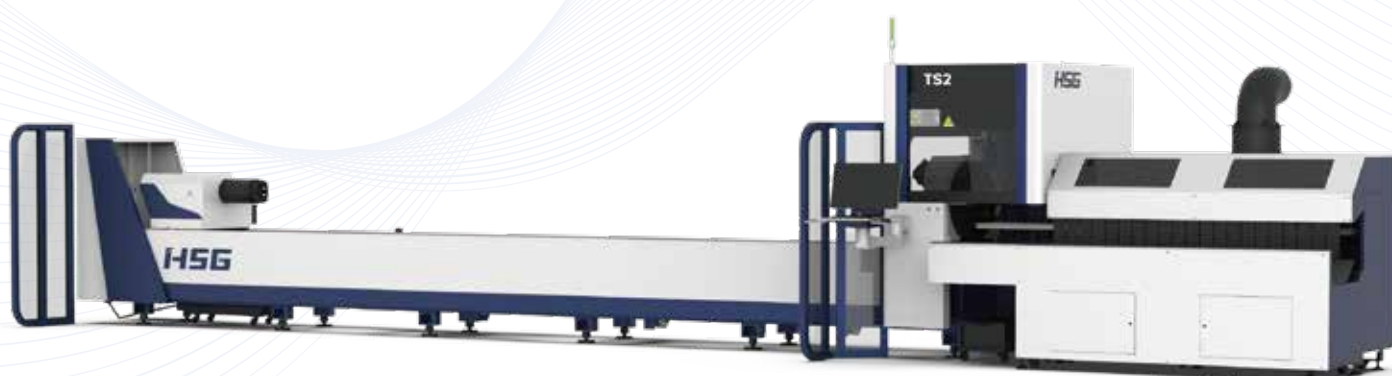




Cutting | Bending | Welding | Automation



# TS 2

✦ Economical and High-speed Tube Laser Cutting Machine ✦

## Company Culture



### MISSION

Intelligent manufacturing changes future



### VALUES

Customer-focused and employee-based



### VISION

Become a respectable enterprise in the global metal forming equipment field

## Company Profile



**13**

13 branches/subsidiaries/  
sub-subsidiaries across the world



**100+**

Serve 100+countries and  
regions



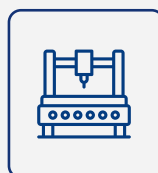
**4**

Manufacturing Bases in  
China



**30+**

Global service outlets

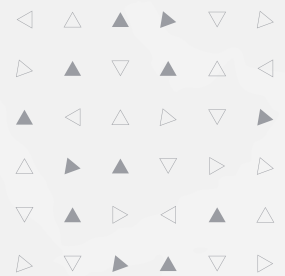


**8000+**Sets  
of Annual Output



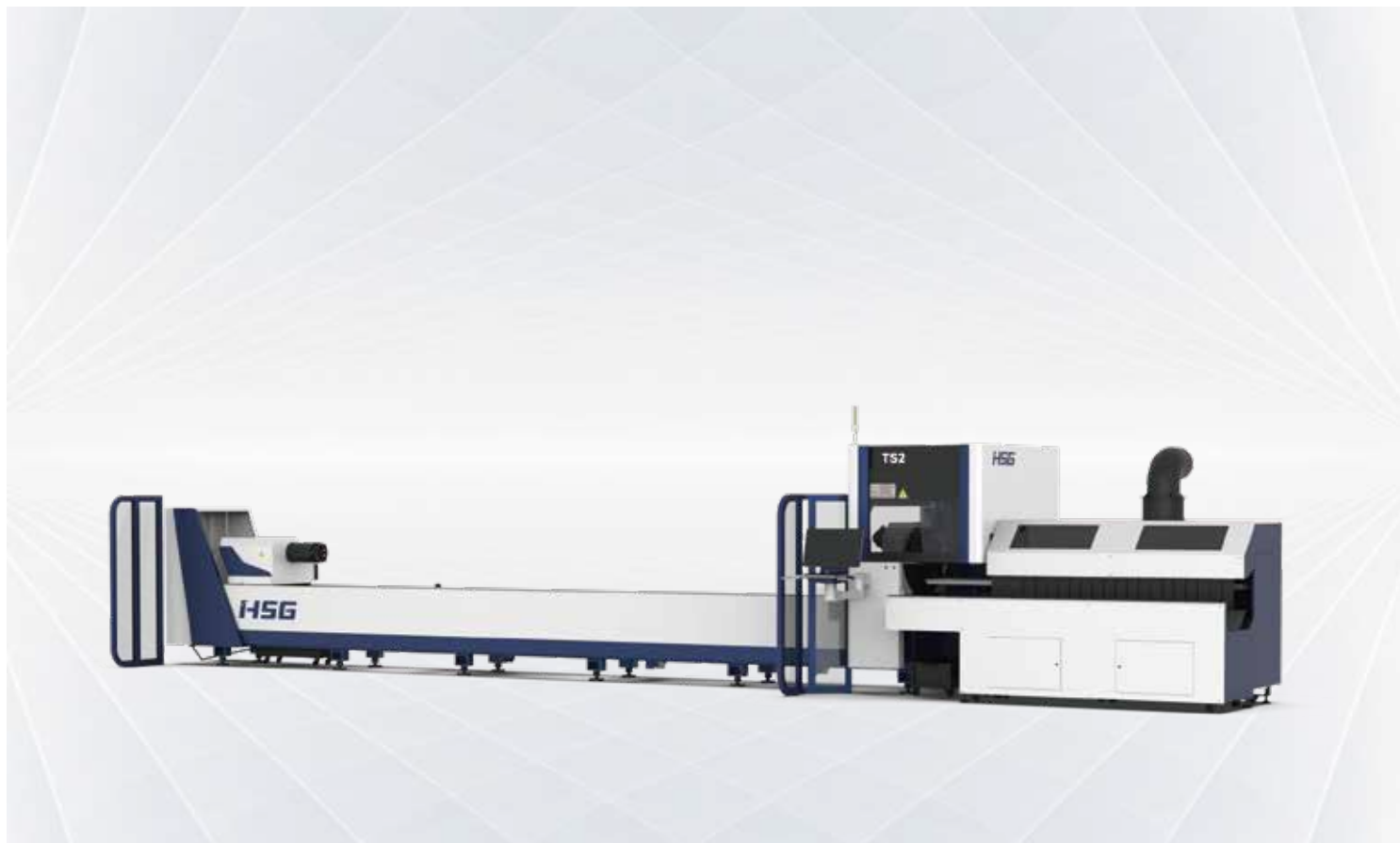
**96000m<sup>2</sup>**

Occupied Area



# TS 2 1500-6000W

## Economical and High-speed Tube Laser Cutting Machine



### Technical Parameters

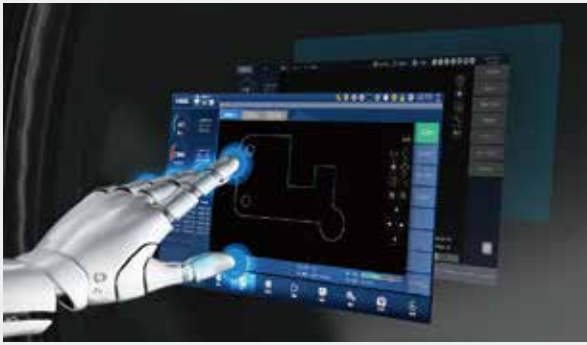
Technical Parameter	TS2
Power	1500-6000W
Rotating Speed of Chucks	100r/min
No-load Speed	100m/min
Acceleration	1G
X/Y-axis Positioning Accuracy	$\pm 0.03\text{mm/m}$ ( $\pm 0.00118''$ )
X/Y-axis Repositioning Accuracy	$\pm 0.03\text{mm}$ ( $\pm 0.00118''$ )
*Tailing Length	$\geq 85\text{mm}$ (3.34")
Cutting Capacity	Round tube $\Phi 20 - \Phi 240\text{mm}$ (0.78"-9.44") Square tube $\square 20 * 20 - \square 240 * 240\text{mm}$ (0.78"-9.44") Side length $\leq 240\text{mm}$ (9.44")
Weight of Single Tube	200kg
Overall Dimensions(L*W*H) with Loading Racks	12500×4700×2500mm(41.01'*15.41'*8.2')

\*Single chuck clamping can be achieved, in the case of reasonable nesting material.

\* Machine appearance, technical parameters, function description, data comparison shown in this page are from HSG in-house laboratory.  
All testing results and experimental data shall be subject to real machine.

## High Speed and Intelligent for Better Processing

- High Speed and Precise  
High-speed data transmission without time delay and strong positional energy control.
- High rotational Speed and Air Velocity  
Bus system and servo motor reduce unproductive time.

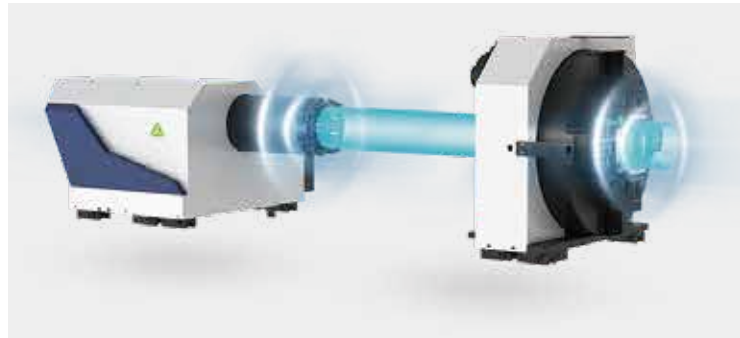


## X9000 Bus-based Tube Cutting Control System

- Simple Interface  
Clear interface is convenient for users operating and shows cutting data in real time to save time and costs.
- Functional Integration Control  
A number of core functions are showed centrally on the interface to reduce operating steps and users can easily learn to operate.

## Rectangular-circle Pneumatic Chucks

- One-key clamping and automatic centering.
- Clamp heavy tube stably by large and constant clamping force.
- Expand clamping range of square tube.  
 $\Phi$  240mm round tube ,  $\leq$  240mm square tube





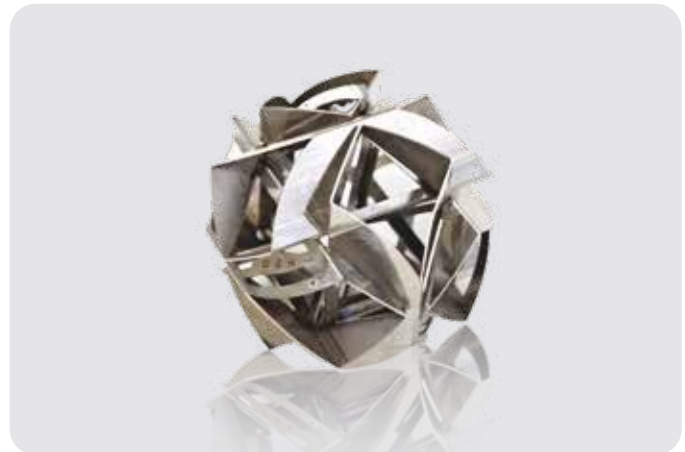
## Powerful Functions Make You Never Spend Time Worrying

- Component Real-time Monitoring and Maintenance Alert  
All components are detected in real time to ensure the stable use and the system is equipped with maintenance alert for careful component management



## Tube Splicing Technology

- The operating control offers 50+ kinds of tube splicing patterns, for convenience of subsequent welding, such as splicing of male and female head of square tube, 90° arc splicing, splicing of round tube tee, splicing of cut-through holes, 45° splicing of hexagon, splicing of angle iron and channel steel, etc.

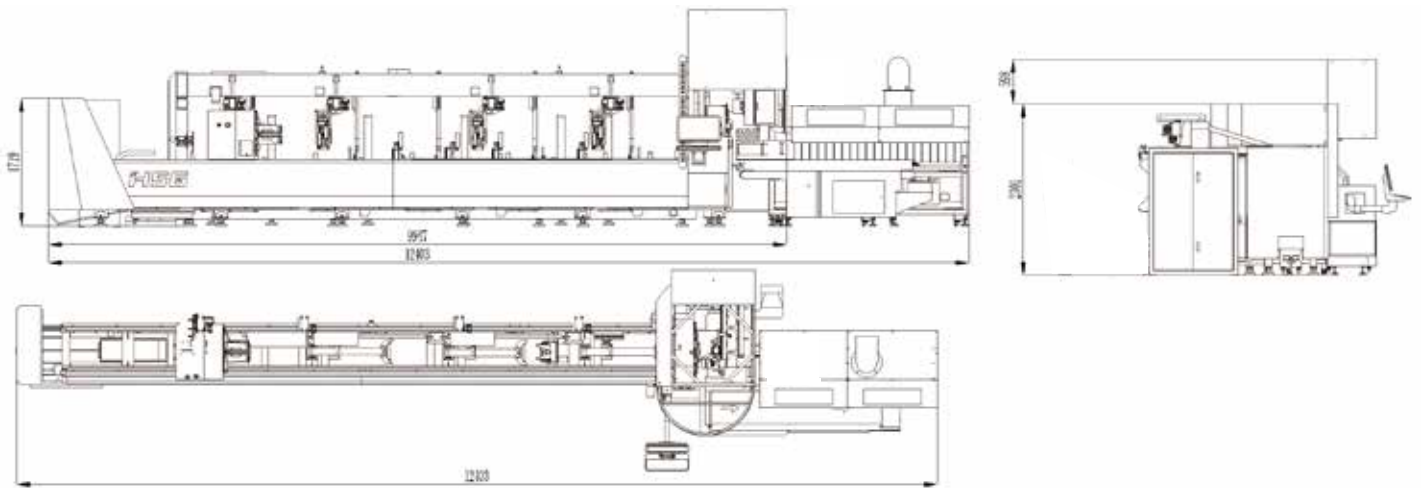


## Leapfrog Technique and Flying Cutting Technique

- Peculiar tube cutting techniques make tube cutting more smooth and efficient.



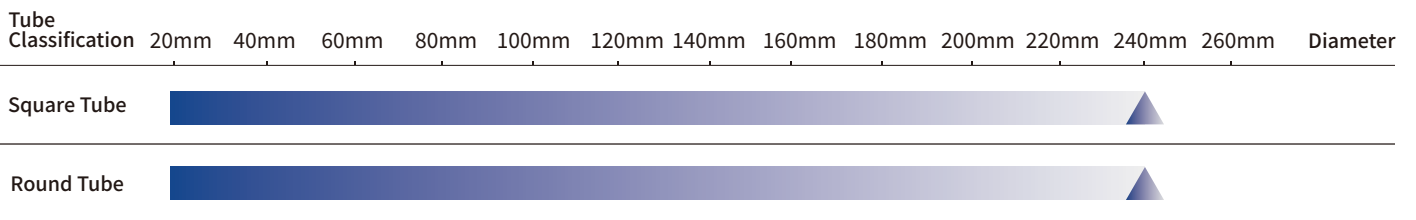
## Machine Foundation \*The marked size has about 10mm error



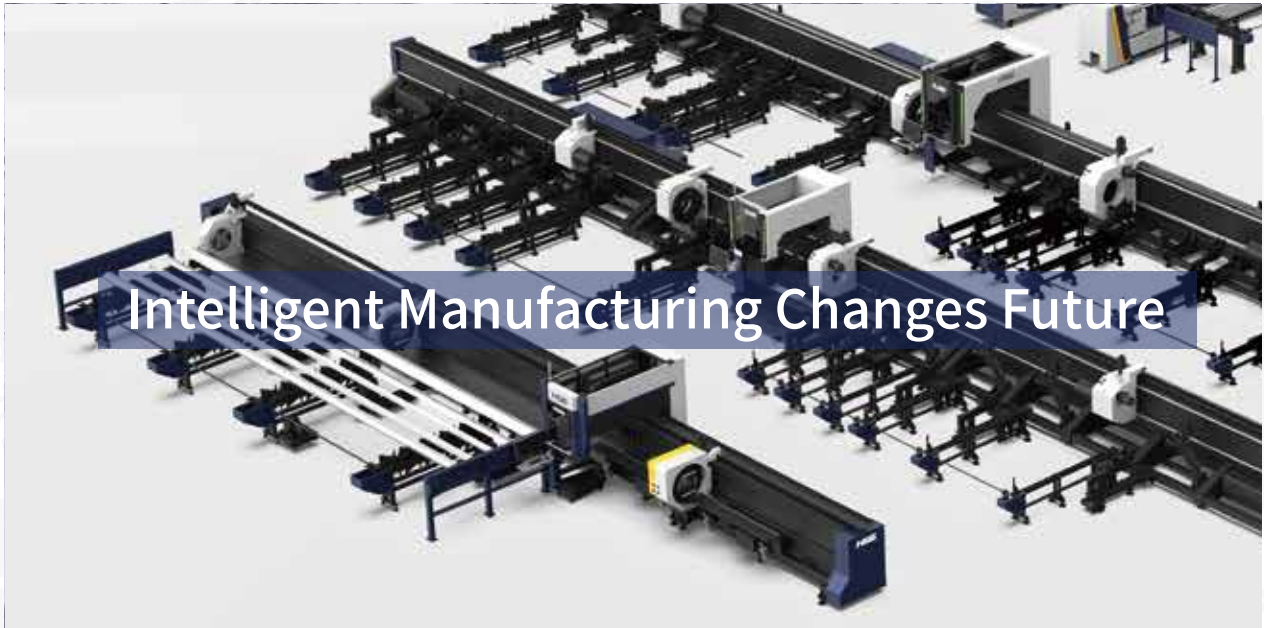
## Cutting Samples



## Cutting Capacity



The actual machines shall prevail and above data & pictures are only for reference.



## Intelligent Manufacturing Changes Future



**As a global enterprise, HSG sticks to providing professional and convenient service support to customers at home and board**



### Professional Training

Multiple technical training service and free operation training for customers and dealers in time



### Efficient Support

Humanistic service model, online services and 7\*24 hotline to offer solutions and assistance



### Optimized Transport

Multi-channel transport solutions and professional transport solution team will provide various transport cases for to satisfy the demand of customers and save transports fees



### Sufficient Accessories

Highly efficient accessories delivery service, multiple network inventory jointly responds to accessories demand to shorten customer's waiting times and accelerate production



### Careful Services

Domestic door-to-door service and free proofing, global 100+dealers provide efficient and convenient services





Intelligent Manufacturing Changes Future



Website



Facebook



Youtube

Headquarters Add.: No. 4, Anye Road, Shunjiang Community Industrial Park,  
Beijiao Town, Shunde District, Foshan, Guangdong, China

Website: [www.hsglaser.com](http://www.hsglaser.com)

Email: [info@hsglaser.com](mailto:info@hsglaser.com)

Tel: +86 757-66833906