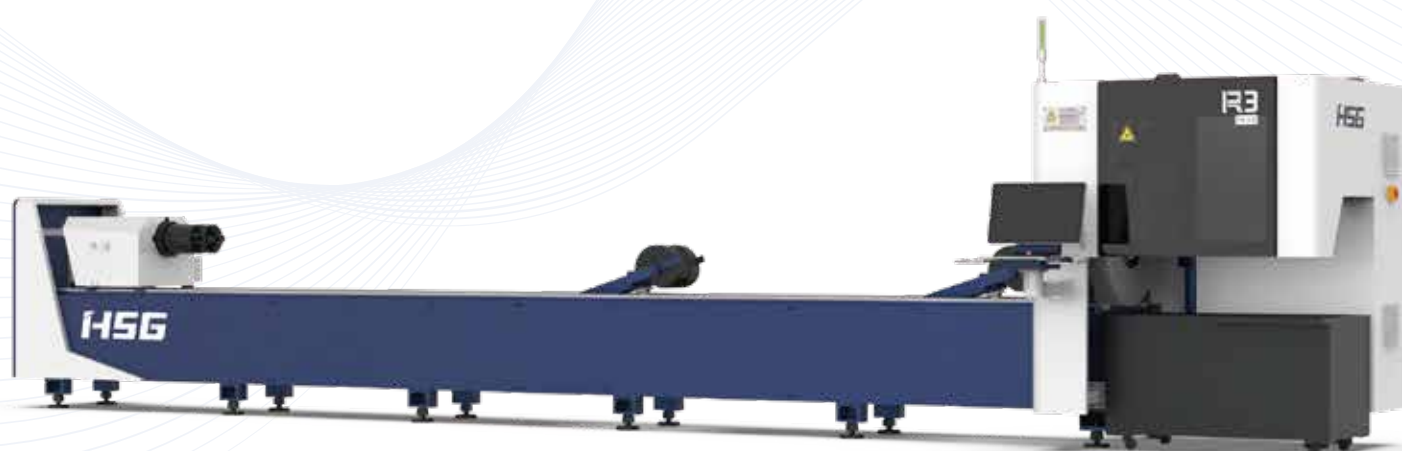




Cutting | Bending | Welding | Automation



# R Series

✦ Double Chucks Economical Tube Laser Cutting Machine ✦

## Company Culture



### MISSION

Intelligent manufacturing changes future



### VALUES

Customer-focused and employee-based



### VISION

Become a respectable enterprise in the global metal forming equipment field

## Company Profile



13

13 branches/subsidiaries/  
sub-subsidiaries across the world



100+

Serve 100+countries and  
regions



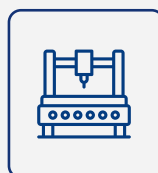
4

Manufacturing Bases in  
China



30+

Global service outlets

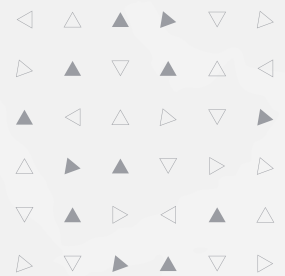


8000+Sets  
of Annual Output



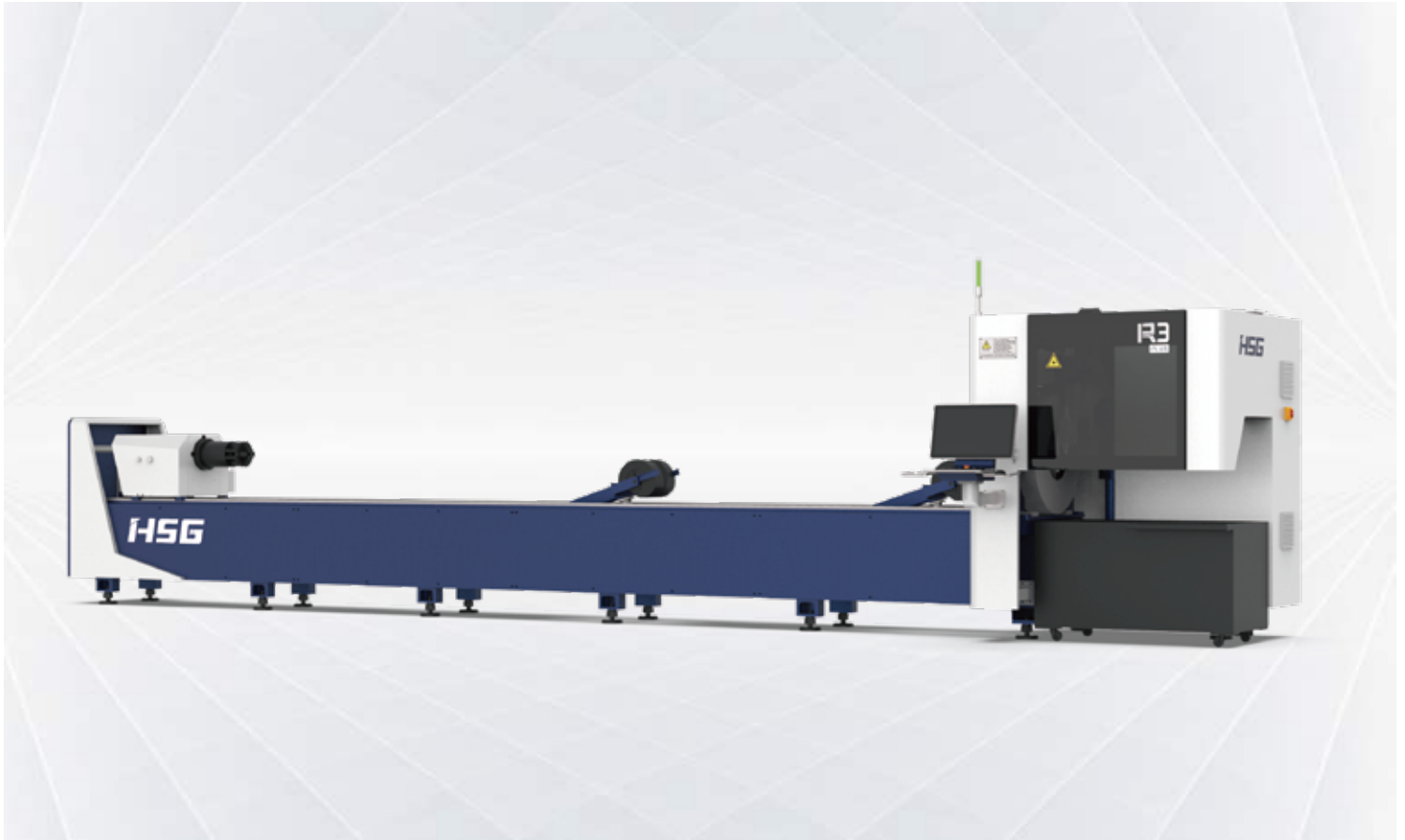
96000m<sup>2</sup>

Occupied Area



# R Series 1500-3000W

## Double Chucks Economical Tube Laser Cutting Machine



### Technical Parameters

| Technical Parameter                             | R3  | R3 PLUS   |
|---|---|---|
| Power   | 1500-3000W  | 1500-3000W  |
| Rotating Speed of Chucks                        | 90r/min   | 90r/min   |
| No-load Speed                                   | 90m/min   | 90m/min   |
| Acceleration                                    | 0.8G  | 0.8G  |
| X/Y-axis Positioning Accuracy                   | ±0.05mm/m (±0.0019")  | ±0.05mm/m (±0.0019")  |
| X/Y-axis Repositioning Accuracy                 | ±0.03mm (±0.00118")   | ±0.03mm (±0.00118")   |
| *Tailing Length                                 | ≥85mm(3.34")  | ≥85mm(3.34")  |
| Cutting Capacity                                | Round tubeφ20-φ219mm(0.78"-8.62")<br>Square tube□20*20-150*150mm(0.78"-5.9")<br>Rectangular diagonal≤219mm(8.62") | Round tubeφ20-φ325mm(0.78"-12.79")<br>Square tube□20*20-230*230mm(0.78"-9.05")<br>Rectangular diagonal≤325mm(9.05") |
| Weight of Single Tube                           | 150kg   | 200kg   |
| Overall Dimensions(L*W*H)<br>with Loading Racks | 10000*4500*2350(33'*14.7'*7.7)  | 10000*4500*2350(33'*14.7'*7.7)  |

\*Single chuck clamping can be achieved, in the case of reasonable nesting material.

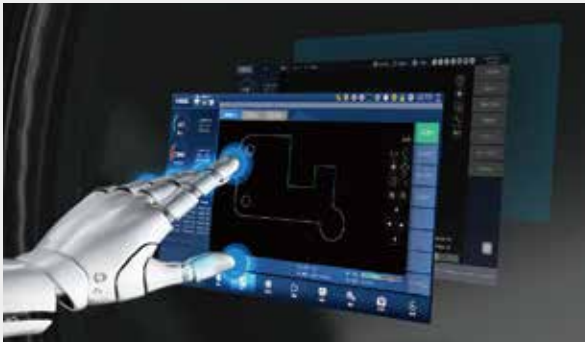
\* Machine appearance, technical parameters, function description, data comparison shown in this page are from HSG in-house laboratory.

All testing results and experimental data shall be subject to real machine.



## High Speed and Intelligent for Better Processing

- High Speed and Precise  
High-speed data transmission without time delay and strong positional energy control.
- High rotational Speed and Air Velocity  
Bus system and servo motor reduce unproductive time.



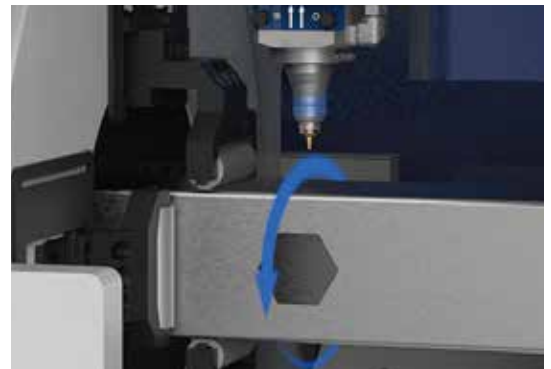
## X9000 Bus-based Tube Cutting Control System

- Simple Interface  
Clear interface is convenient for users operating and shows cutting data in real time to save time and costs.
- Functional Integration Control  
A number of core functions are showed centrally on the interface to reduce operating steps and users can easily learn to operate.



## Leapfrog Technique And Flying Cutting Technique

- Peculiar tube cutting techniques make tube cutting more smooth.





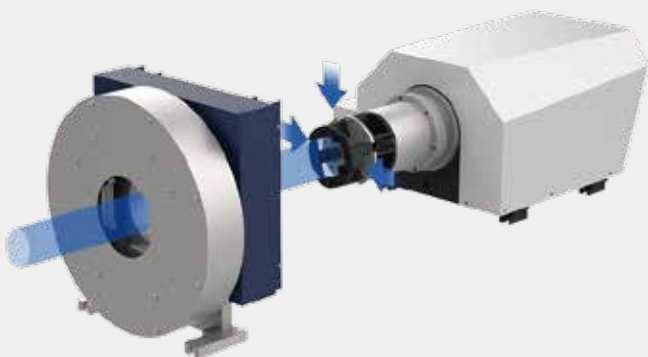
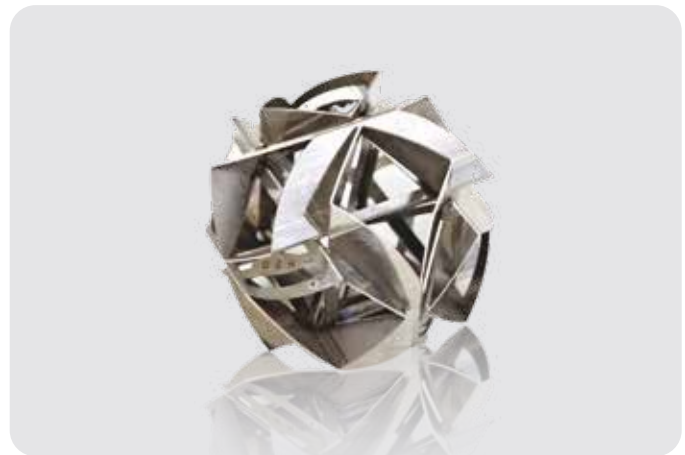
## Powerful Functions Make You Never Spent Time Worrying

- Component Real-time Monitoring and Maintenance Alert  
All components are detected in real time to ensure the stable use and the system is equipped with maintenance alert for careful component management.



## Tube Splicing Technology

- The operating control offers 50+ kinds of tube splicing patterns, for convenience of subsequent welding, such as splicing of male and female head of square tube, 90° arc splicing, splicing of round tube tee, splicing of cut-through holes, 45° splicing of hexagon, splicing of angle iron and channel steel, etc.



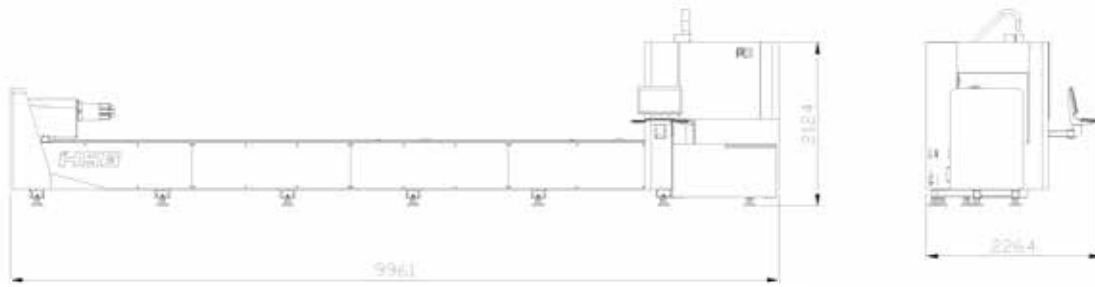
## Automatic Pneumatic Double Chucks

- Automatic centering the chucks.
- Pneumatic chuck clamping with large clamping force.



# Machine Foundation

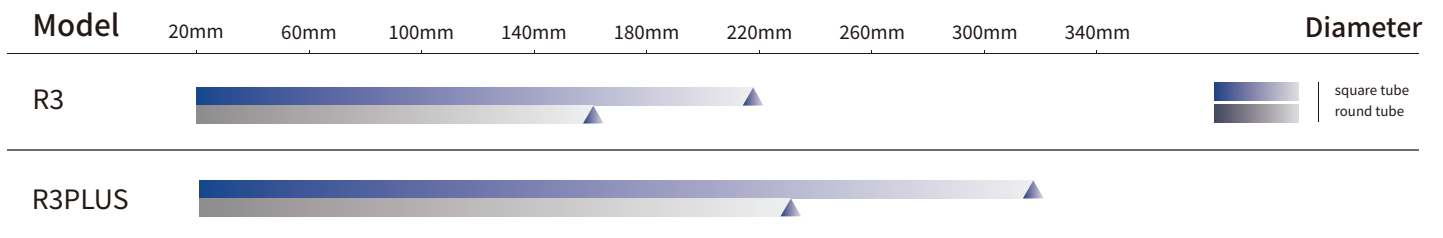
\*The marked size has about 10mm error  
\*Pictures of R3 are for reference only and subject to actual dimensions.



## Cutting Samples



## Cutting Capacity



The actual machines shall prevail and above data & pictures are only for reference.



## Intelligent Manufacturing Changes Future



**As a global enterprise, HSG sticks to providing professional and convenient service support to customers at home and board**



### Professional Training

Multiple technical training service and free operation training for customers and dealers in time



### Efficient Support

Humanistic service model, online services and 7\*24 hotline to offer solutions and assistance



### Optimized Transport

Multi-channel transport solutions and professional transport solution team will provide various transport cases for to satisfy the demand of customers and save transports fees



### Sufficient Accessories

Highly efficient accessories delivery service, multiple network inventory jointly responds to accessories demand to shorten customer's waiting times and accelerate production



### Careful Services

Domestic door-to-door service and free proofing, global 100+dealers provide efficient and convenient services



Intelligent Manufacturing Changes Future



Website



Facebook



Youtube

Headquarters Add.: No. 4, Anye Road, Shunjiang Community Industrial Park,  
Beijiao Town, Shunde District, Foshan, Guangdong, China

Website: [www.hsglaser.com](http://www.hsglaser.com)

Email: [info@hsglaser.com](mailto:info@hsglaser.com)

Tel: +86 757-66833906